

Mrs. Fernandes Mr. Worrell Ms. Nordsrom

General Class Expectations for ALL Agriculture Classes

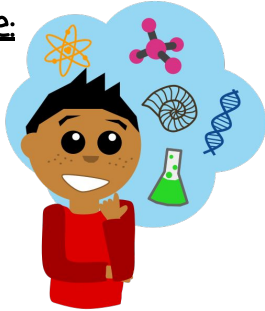
Student Course Outline and Expectations 2020-2021

Instructor Contact Info:

Mrs. Fernandes
jfernandes@fjuhsd.org
714-992-8778
Remind Codes:

Rubric Grading Scale:

3.6-4.0 ~ A
3.0-3.5 ~ B
2.0-2.9 ~ C
1.0-1.9 ~ D
.90 - Lower ~ F



Course Description

Sustainable Agriculture is a one year course designed to integrate biological science practices and knowledge into the practice of sustainable agriculture. The course is organized into four major sections, or units, each with a guiding question. Unit one addresses the question, What is sustainable agriculture? Unit two, How does sustainable agriculture fit into our environment? Unit three, What molecular biology principles guide sustainable agriculture? Unit four, How do we make decisions to maximize sustainable agricultural practices within a functioning ecosystem? Within each unit specific life science principles will be identified with agricultural principles and practices guiding the acquisition of this knowledge, culminating in the development of a sustainable farm model and portfolio of supporting student research.

Items you'll need for class:

School Provided:

- School Issued Laptop
- Charger

Provided by YOU:

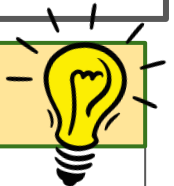
- Positive Attitude
- Camera Accessibility

We will be utilizing your school issued computer **DAILY**. It will be the student's responsibility to have it charged and ready to use.

Grading Policies

50% Academic Standards (Homework, labs, class assignments)
20% Academic Standards - Tests
15% CTE **Leadership** Standards (FFA)
15% CTE **Career** Standards (SAE Project)

Fernandes' TIP



Don't forget to complete your CTE Leadership and CTE Career Standards Activities!! These are the items that will get you hand's on experience, new friendships and tremendous leadership skills!

My Course Policies and Expectations

- **LATE WORK**
 - **ALL** assignments will be given a due date, **LATE WORK** will be accepted, however the student will receive half credit, maximum score of 2 out of 4 for their assignment.
- **CTE Leadership Standard Activities (FFA Participation):** You must participate in **5** activities each semester for full credit. (Ag Department Policy)
- **CTE Career Standard Activities (SAE Project):** All students enrolled in an agriculture class must conduct an approved SAE project each year and keep accurate, up-to-date records in AET under the guidance of an advisor.
- **NO EXTRA CREDIT** will be offered. Students can raise their grade by completing more CTE Leadership Standards events than the 5 that are required each semester. If a student completes 8 it is ½ a letter grade raise, complete 10 or more and receive a full letter grade raise. Letter grade raises will be awarded at the end of each semester **ONLY**.
- **PLAGIARISM / ACADEMIC HONESTY:** Any student(s) caught cheating on a test or quiz, or copying any portions of assignments or lab reports will receive a **ZERO** for that activity. They will **NOT** be able to make it up for partial credit.
- **Digital Citizenship & Camera Time:** It is expected that each student will:
 - Be online on time **DAILY**- it is recommended you join the call 3-5 minutes earlier than the time posted
 - Be dressed appropriately per school policies
 - Have a quiet place where you can minimize distractions to work
 - Have your chromebook camera on and showing your face during class time, unless there is an emergency or circumstance that makes it impossible
 - Student to be an active participant in our daily live interaction and assignments
- **Absent? MAKE-UP WORK:** It is the **student's responsibility** to ask for any work or assignments that were missed

Personal Items Policy

For student safety, ease of movement around the classroom and to reduce distractions - All backpacks, **cell phones**, purses or other items that students bring to class will be stored on the back counter of the classroom. I will greet you at the door daily and let you know what you will need for the class. ALL other items will be placed on the back counter, where you can see them but not access them.

Consequences:

- 1st Offense - Phone is taken till the end of period & detention
- 2nd Offense - Phone is taken till the end of period, detention and call home
- 3rd Offense - Referral to office

Course Outline

Unit 1 - CA Agriculture, CTE Leadership & Career Standards

Unit 2 - Science Skills

Unit 3 - Ecology

Unit 4 - Energy

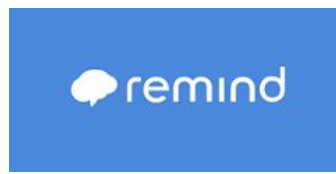
Unit 5 - Cells & Body Systems

Unit 6 - Genetics

Unit 7 - Evolution

Unit 8 - Population Dynamics

Unit 9 - Human Impact



Google Classroom



Fernandes' TIP

Make sure the contact information is current for PARENTS and STUDENTS in Aeries Communication. We send out a large amount of reminders regarding classwork as well as CTE Leadership and Career Standard activities. Also sign up on REMIND!



@buenaparkffa

www.buenaparkffa.com

More info about our program can be found here!



More Info

CTE Leadership Standards

Description: Leadership standard activities are activities created by our student chapter officer team or hosted by the various levels of leadership throughout our state FFA Organization. ALL activities are designed to help YOU gain necessary leadership skills for success in your future career path.

- Calendar of Events
- Leadership Standards Plan

CTE Career Standards

Description: All students will select ONE agriculture enterprise for their supervised agriculture experience. This experience will require monthly meetings, record keeping in AET and potentially physical on-campus time with animals or our farm operations depending on the enterprise that you select.

- Career Standards Plan

Click the
link NOW!

How to Earn YOUR Grade in Your Agriculture Class

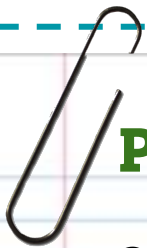
Students must watch each of the online videos and complete each quiz with an **80% or higher** to receive August Career & Leadership standards credit.

- CTE Career Standards
- CTE Leadership Standards
- Class Expectations
- Technology in Agriculture

Benefits of completing this task-

- ★ Achieve 30% of your grade for your first report card
- ★ Learn all about our Agriculture Program and our Expectations
- ★ Learn about your career standard SAE projects
- ★ Learn more about all of the leadership opportunities you can explore

Videos and quizzes are viewable NOW and you have until August 28th to complete the task!



Parent and Student Signature

Given the digital nature of our school year, I will be asking that families sign the class syllabus digitally. Please follow the URL link below and complete the requested information.

A signed copy will be returned to you in the email that you provide.

I'm looking forward to an excellent school year. I pray we are all flexible and understanding of each other. Please let me know if you have any questions.